



ECHO FROM BEYOND

BASTIAAN WOUDT

ECHO FROM BEYOND

AI × Photography · Ongoing since 2024

Echo from Beyond is an ongoing body of work in which Bastiaan Woudt merges his photographic archive with artificial intelligence. Not as documentation of the world outside, but as an exploration of the world within. The project began in 2023 as a creative sketchbook, a space parallel to his established photographic practice where the rules are different and the images do not need to exist before they are made.

The work draws on more than thirteen years of photographs, thousands of images accumulated across projects in Morocco, Uganda, Nepal, Zambia, Japan and the studio. This archive serves as raw material: texture, form, tone, memory. Through AI, Woudt feeds these fragments back into a process that reshapes them into something new. Each image is the result of a sustained dialogue between what was photographed and what was imagined.

The images share the visual language of Woudt's photography: monochrome, high contrast, minimal, shaped by shadow and form. But the subjects are different. Figures emerge from impossible landscapes. Architecture folds in on itself. Nature takes forms that hover between the organic and the surreal.

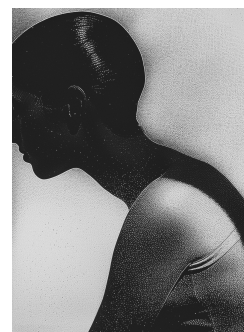
Every work is unique. There are no editions. The prints are made using Piezography Pro inks on Awagami Bizan Medium White, a handmade Japanese paper. The contrast between cutting-edge digital creation and centuries-old material is deliberate.

“I SHUT MY EYES IN ORDER TO SEE.”

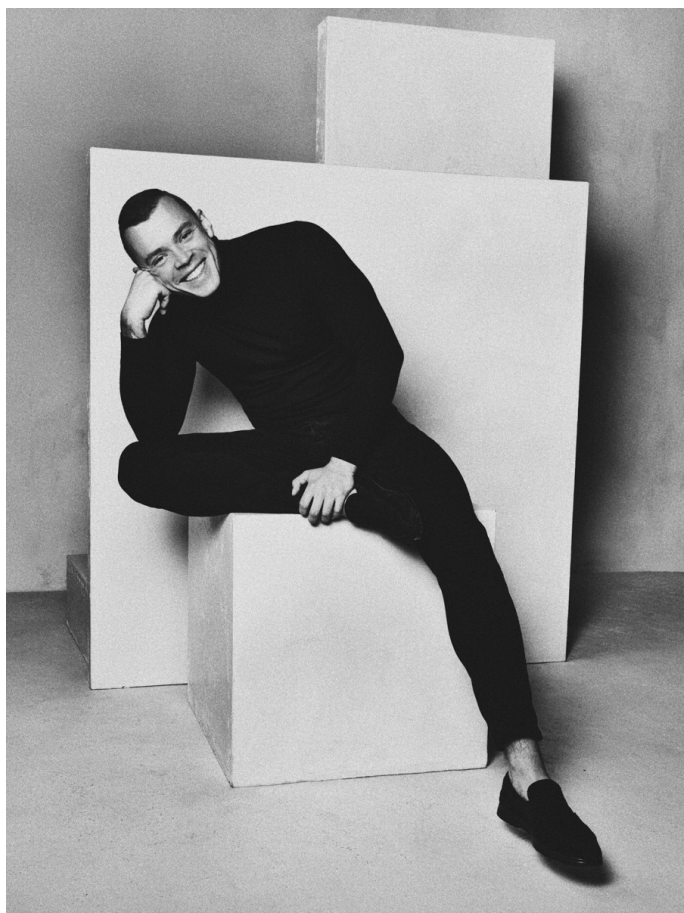
– Paul Gauguin

PROJECT DETAILS

MEDIUM	AI × Photography
STARTED	2023
PAPER	Awagami Bizan Medium White
INK	Piezography Pro
PRINTING	Studio Luc Brefeld
EDITION	Each work unique



BASTIAAN WOUTD



Bastiaan Woudt (b. 1987, the Netherlands) is a Dutch fine art photographer whose monochrome work is defined by graphic clarity, strong contrast and a deliberate use of negative space. His images strip away the incidental to reveal form, texture, light and shadow in their purest state.

His work has been exhibited internationally at galleries and institutions including Bildhalle (Zurich, Amsterdam), Atlas Gallery (London), Jackson Fine Art (Atlanta), Fahey/Klein Gallery (Los Angeles) and Jaeger Art (Berlin). His photographs are held in private and public collections worldwide, including the Getty Museum (Los Angeles) and the Rijksmuseum (Amsterdam).

Echo from Beyond represents a new chapter in Woudt's practice: the merging of his photographic archive with AI to reach images that a camera alone cannot make. The project debuted at Jaeger Art Berlin in September 2024 and has since been exhibited internationally.

THE WORKS

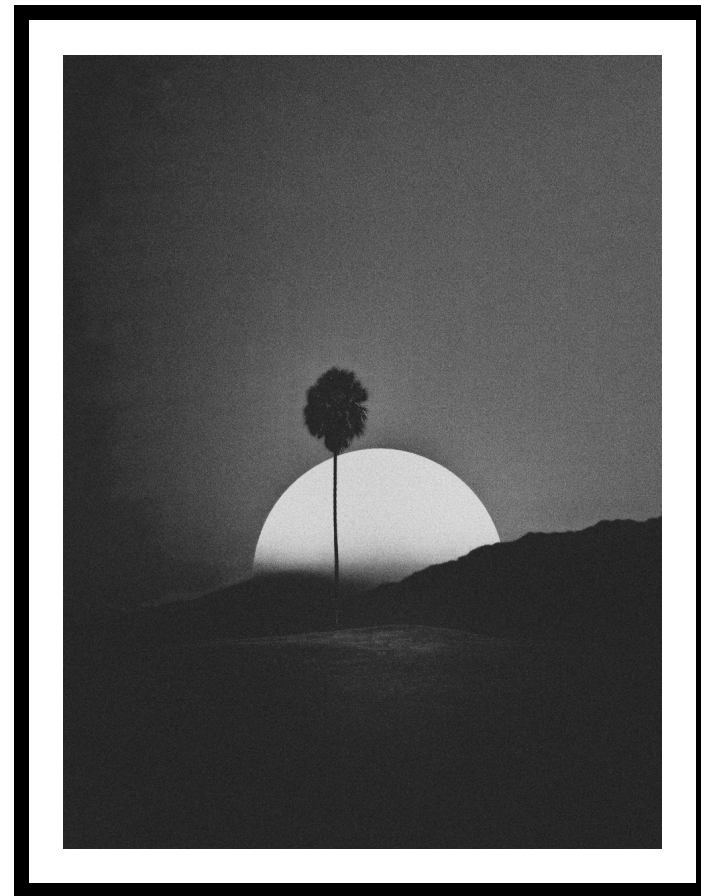
Every image in Echo from Beyond is unique. There are no editions. Each work exists as a single piece, numbered sequentially.

The prints are made using Piezography Pro inks on Awagami Bizan Medium White, a handmade Japanese paper. The deliberate contrast between cutting-edge digital creation and centuries-old paper is central to the work's identity. The delicacy and texture of the Japanese paper adds a physical quality that resists the assumed coldness of AI-generated imagery.

Printing is handled by Studio Luc Brefeld.

AVAILABLE FORMATS

POSTCARD	Awagami Bizan Medium White
A5	Awagami Bizan Medium White
A4	Awagami Bizan Medium White
A3	Awagami Bizan Medium White
A2	Awagami Bizan Medium White
60 × 80 CM	Awagami Bizan Medium White
150 × 200 CM	Awagami Bizan Medium White



PRICING

Every work in Echo from Beyond is unique – there are no editions. Prices are determined individually based on format, subject, and the position of the work within the series.

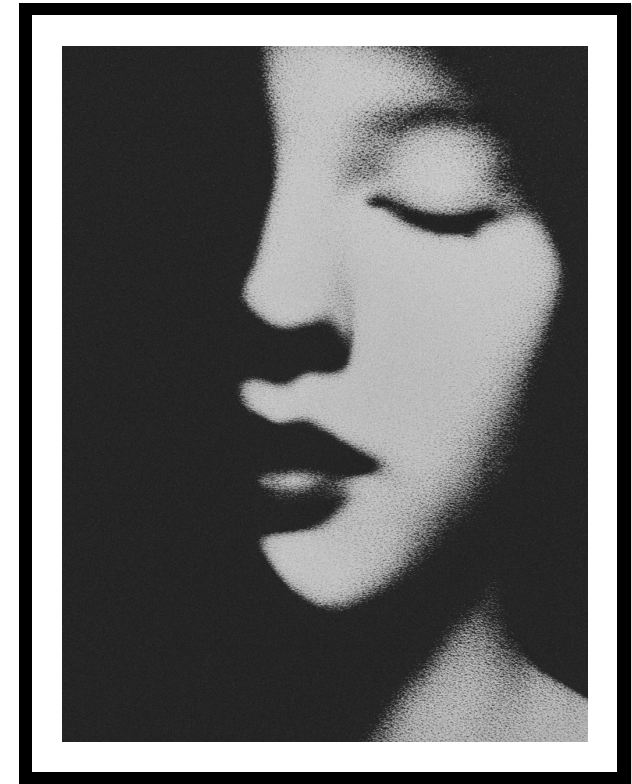
AVAILABLE FORMATS

FORMAT	PAPER	TECHNIQUE
POSTCARD	Awagami Bizan Medium White	Piezography Pro
A5	Awagami Bizan Medium White	Piezography Pro
A4	Awagami Bizan Medium White	Piezography Pro
A3	Awagami Bizan Medium White	Piezography Pro
A2	Awagami Bizan Medium White	Piezography Pro
60 × 80 CM	Awagami Bizan Medium White	Piezography Pro
150 × 200 CM	Awagami Bizan Medium White	Piezography Pro

GALLERY PRICING

FORMAT	PRINT ONLY	FRAMED	NL (INCL. TAX)
POSTCARD	€ 1,250	€ 1,575	€ 1,700
A5	€ 1,750	€ 2,075	€ 2,250
A4	€ 2,250	€ 2,575	€ 2,800
A3	€ 3,250	€ 3,650	€ 3,800
A2	€ 3,900	€ 4,400	€ 4,800
60 × 80 CM	€ 6,500	€ 6,950	€ 7,500
150 × 200 CM	€ 12,500	€ 13,600	€ 15,000

All prices exclude VAT unless stated. Contact gallery or studio for availability.



ECHO 29

2025

PAPER
Awagami Bizan Medium White

TECHNIQUE
Piezography Pro

EDITION
Unique



ECHO 30

2025

PAPER
Awagami Bizan Medium White

TECHNIQUE
Piezography Pro

EDITION
Unique



ECHO 31

2025

PAPER
Awagami Bizan Medium White

TECHNIQUE
Piezography Pro

EDITION
Unique



ECHO 32

2025

PAPER
Awagami Bizan Medium White

TECHNIQUE
Piezography Pro

EDITION
Unique



ECHO 33

2025

PAPER
Awagami Bizan Medium White

TECHNIQUE
Piezography Pro

EDITION
Unique



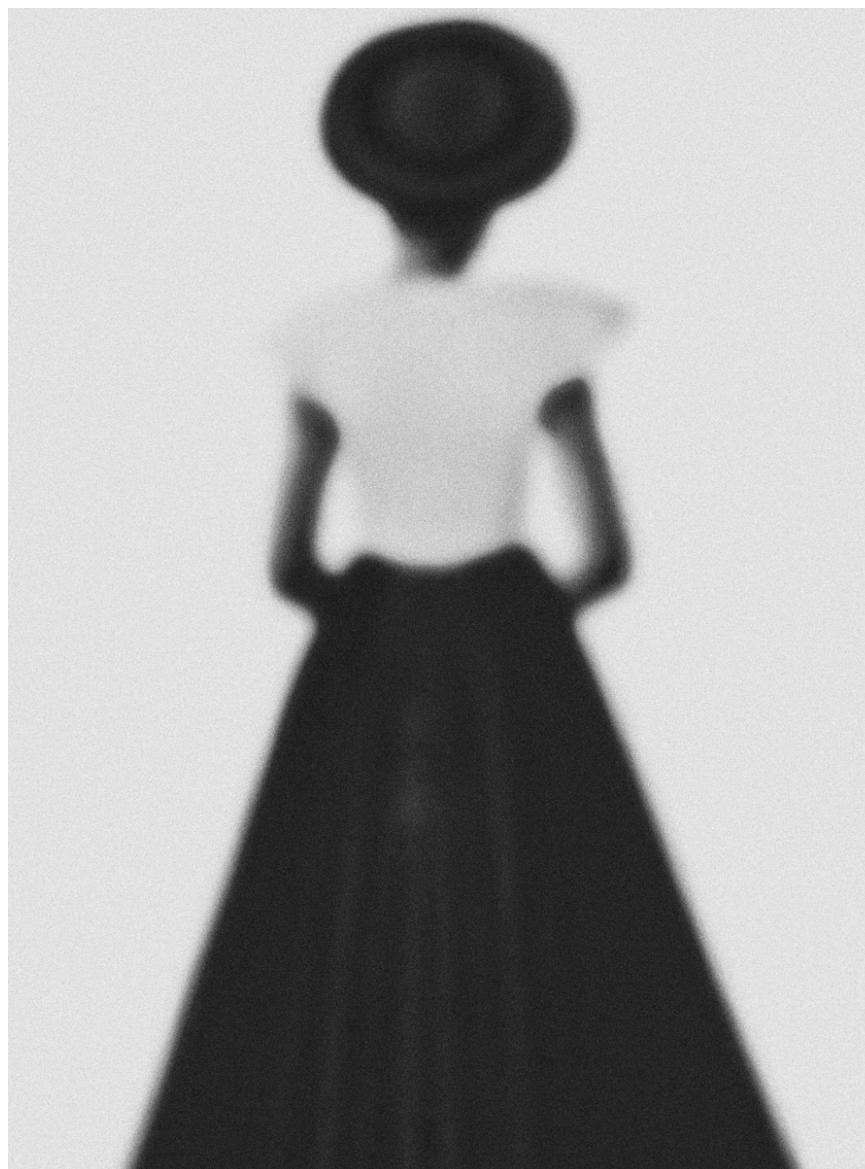
ECHO 34

2025

PAPER
Awagami Bizan Medium White

TECHNIQUE
Piezography Pro

EDITION
Unique



ECHO 35

2025

PAPER
Awagami Bizan Medium White

TECHNIQUE
Piezography Pro

EDITION
Unique



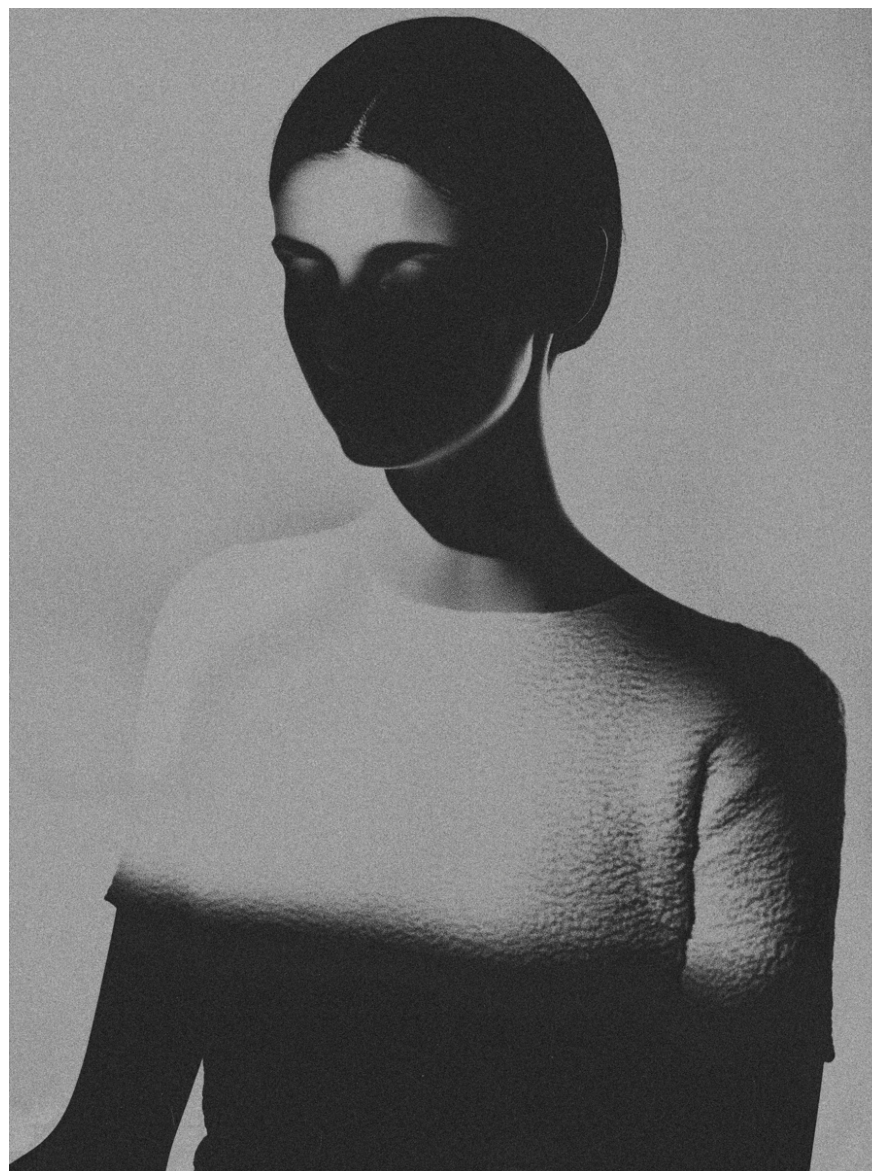
ECHO 36

2025

PAPER
Awagami Bizan Medium White

TECHNIQUE
Piezography Pro

EDITION
Unique



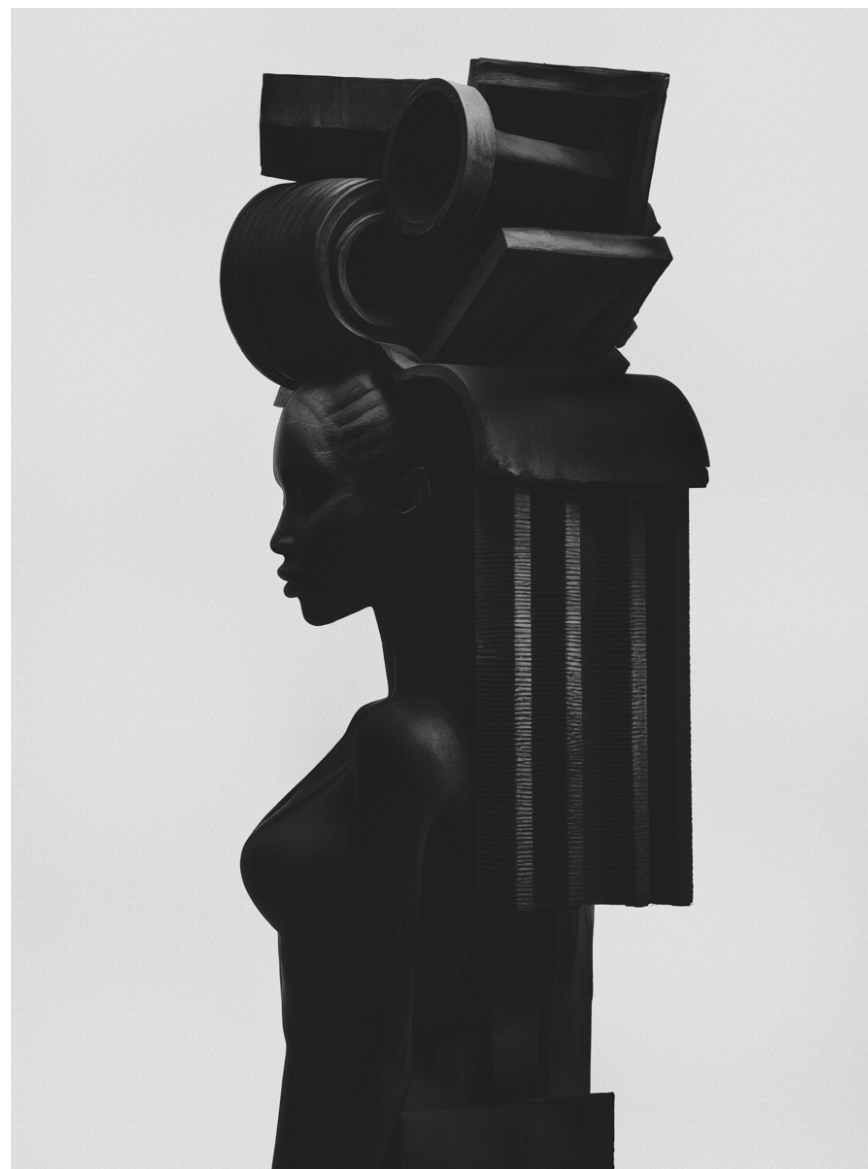
ECHO 37

2025

PAPER
Awagami Bizan Medium White

TECHNIQUE
Piezography Pro

EDITION
Unique



ECHO 38

2025

PAPER
Awagami Bizan Medium White

TECHNIQUE
Piezography Pro

EDITION
Unique



ECHO 39

2025

PAPER
Awagami Bizan Medium White

TECHNIQUE
Piezography Pro

EDITION
Unique



ECHO 40

2025

PAPER
Awagami Bizan Medium White

TECHNIQUE
Piezography Pro

EDITION
Unique



ECHO 41

2025

PAPER
Awagami Bizan Medium White

TECHNIQUE
Piezography Pro

EDITION
Unique



ECHO 42

2025

PAPER
Awagami Bizan Medium White

TECHNIQUE
Piezography Pro

EDITION
Unique



ECHO 43

2025

PAPER
Awagami Bizan Medium White

TECHNIQUE
Piezography Pro

EDITION
Unique



ECHO 44

2025

PAPER
Awagami Bizan Medium White

TECHNIQUE
Piezography Pro

EDITION
Unique



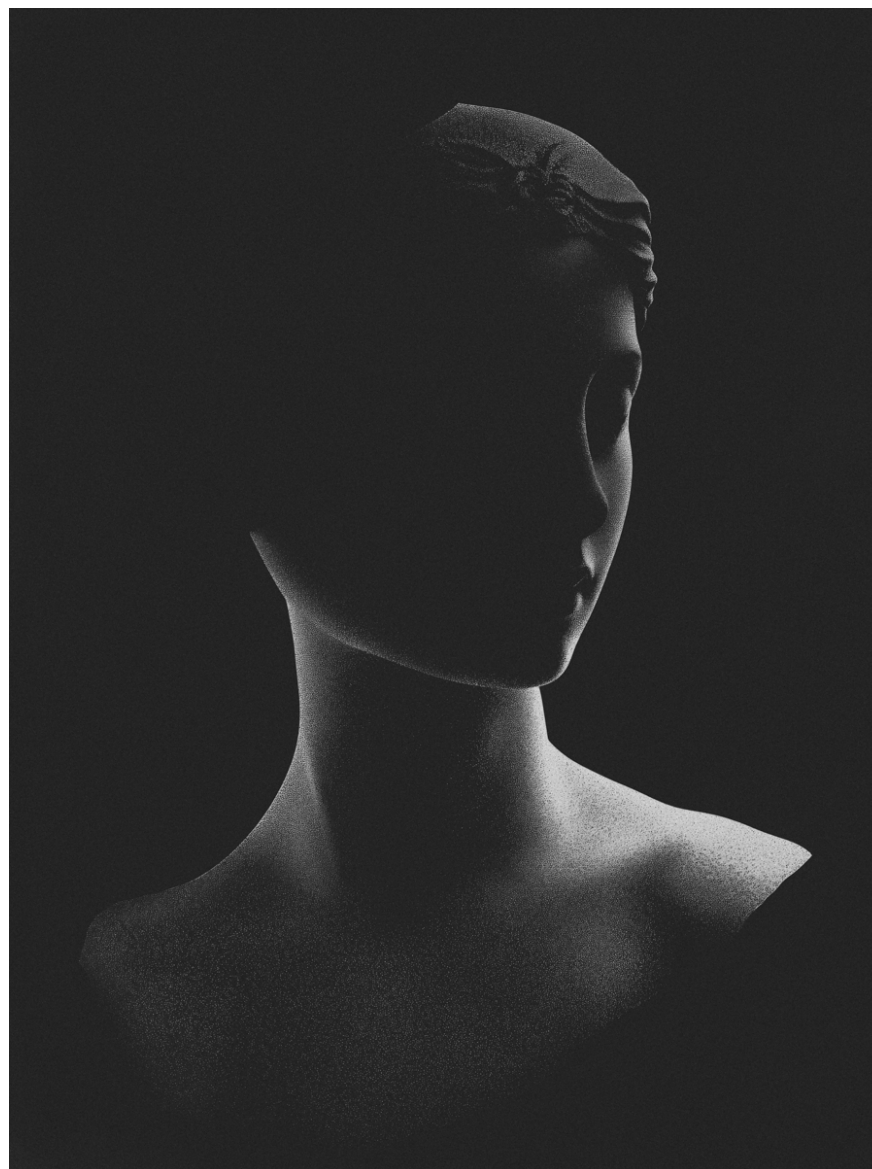
ECHO 45

2025

PAPER
Awagami Bizan Medium White

TECHNIQUE
Piezography Pro

EDITION
Unique



ECHO 46

2025

PAPER
Awagami Bizan Medium White

TECHNIQUE
Piezography Pro

EDITION
Unique



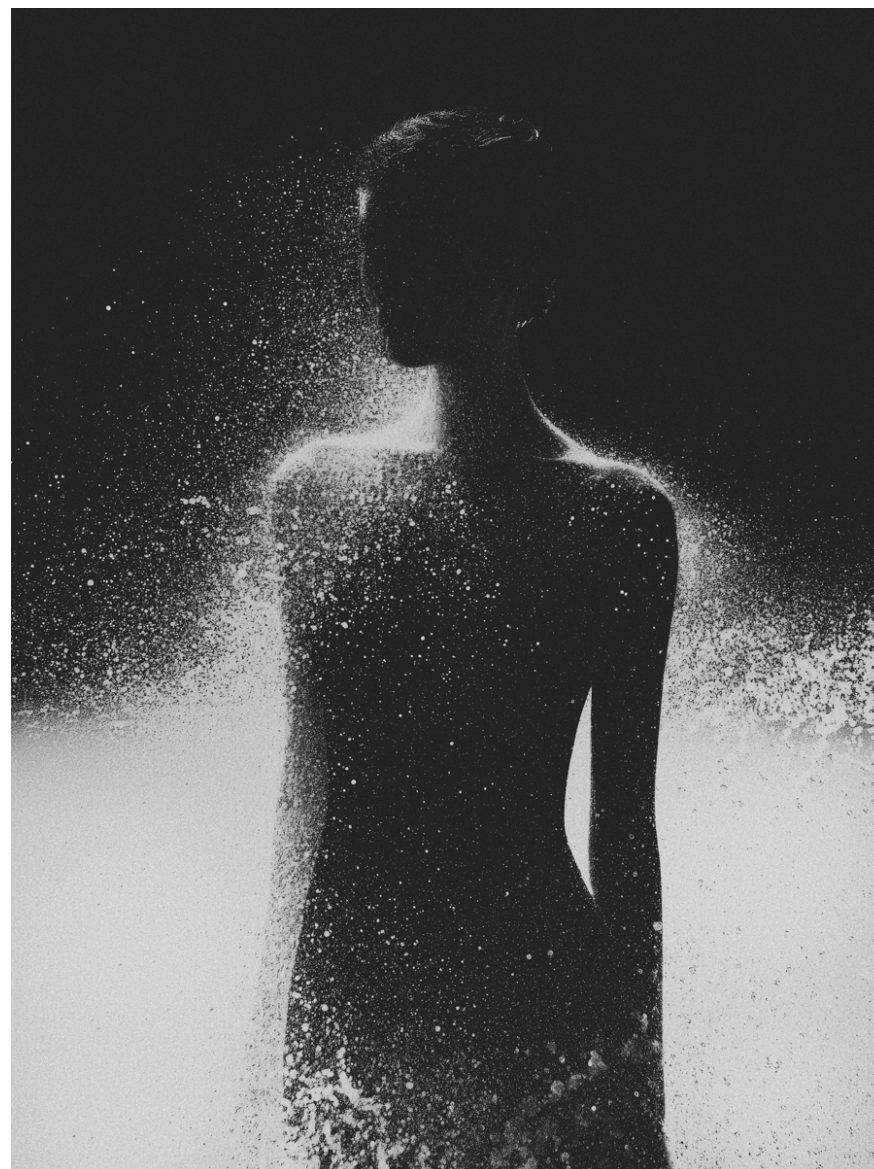
ECHO 47

2025

PAPER
Awagami Bizan Medium White

TECHNIQUE
Piezography Pro

EDITION
Unique



ECHO 48

2025

PAPER
Awagami Bizan Medium White

TECHNIQUE
Piezography Pro

EDITION
Unique



ECHO 49

2025

PAPER
Awagami Bizan Medium White

TECHNIQUE
Piezography Pro

EDITION
Unique



ECHO 50

2025

PAPER
Awagami Bizan Medium White

TECHNIQUE
Piezography Pro

EDITION
Unique



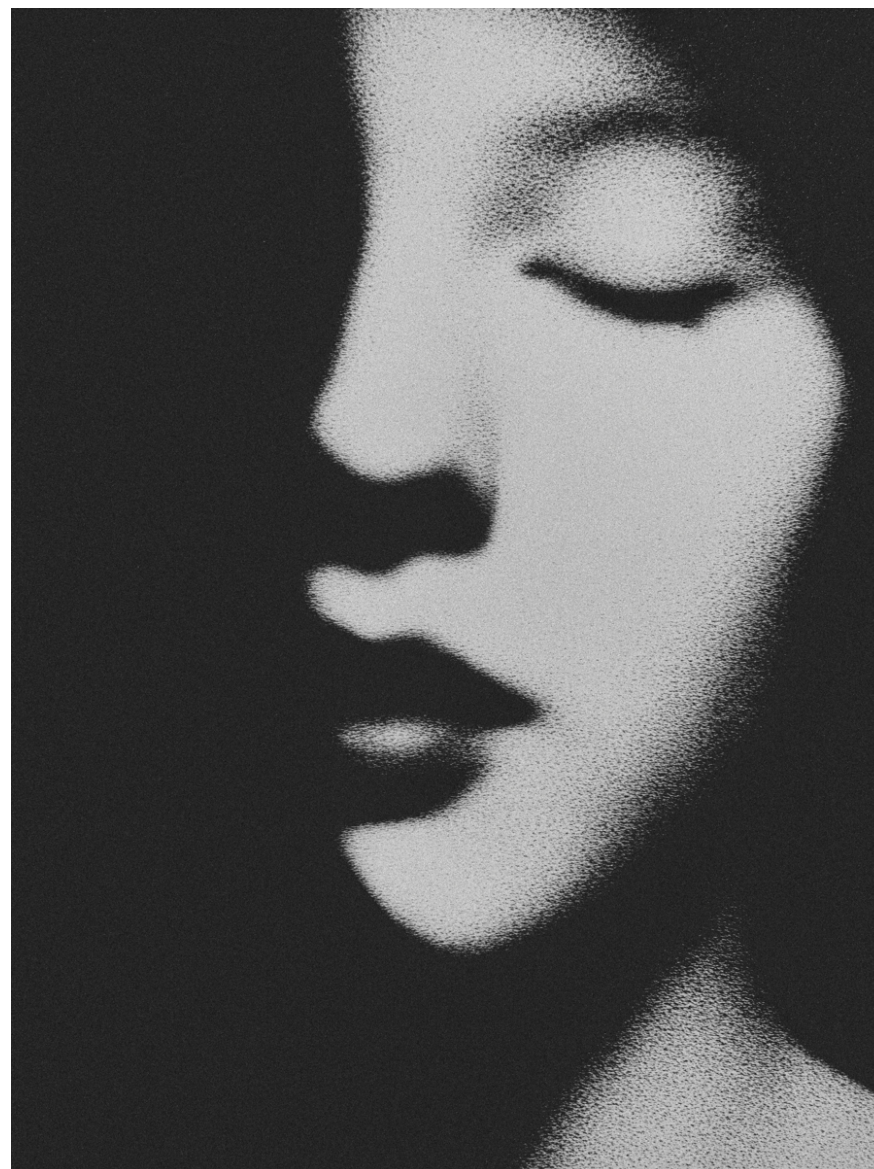
ECHO 51

2025

PAPER
Awagami Bizan Medium White

TECHNIQUE
Piezography Pro

EDITION
Unique



ECHO 52

2025

PAPER
Awagami Bizan Medium White

TECHNIQUE
Piezography Pro

EDITION
Unique



ECHO 53

2025

PAPER
Awagami Bizan Medium White

TECHNIQUE
Piezography Pro

EDITION
Unique



ECHO 54

2025

PAPER
Awagami Bizan Medium White

TECHNIQUE
Piezography Pro

EDITION
Unique



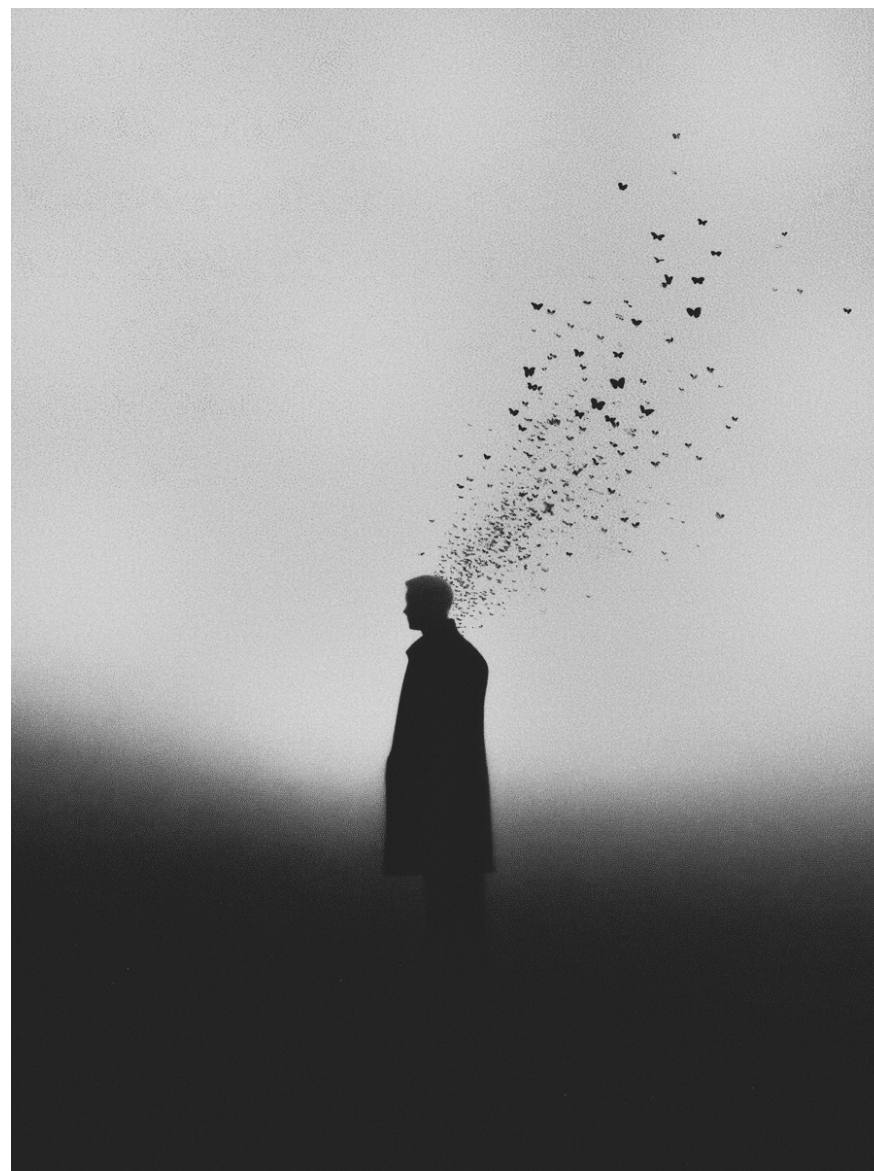
ECHO 55

2025

PAPER
Awagami Bizan Medium White

TECHNIQUE
Piezography Pro

EDITION
Unique



ECHO 56

2025

PAPER
Awagami Bizan Medium White

TECHNIQUE
Piezography Pro

EDITION
Unique



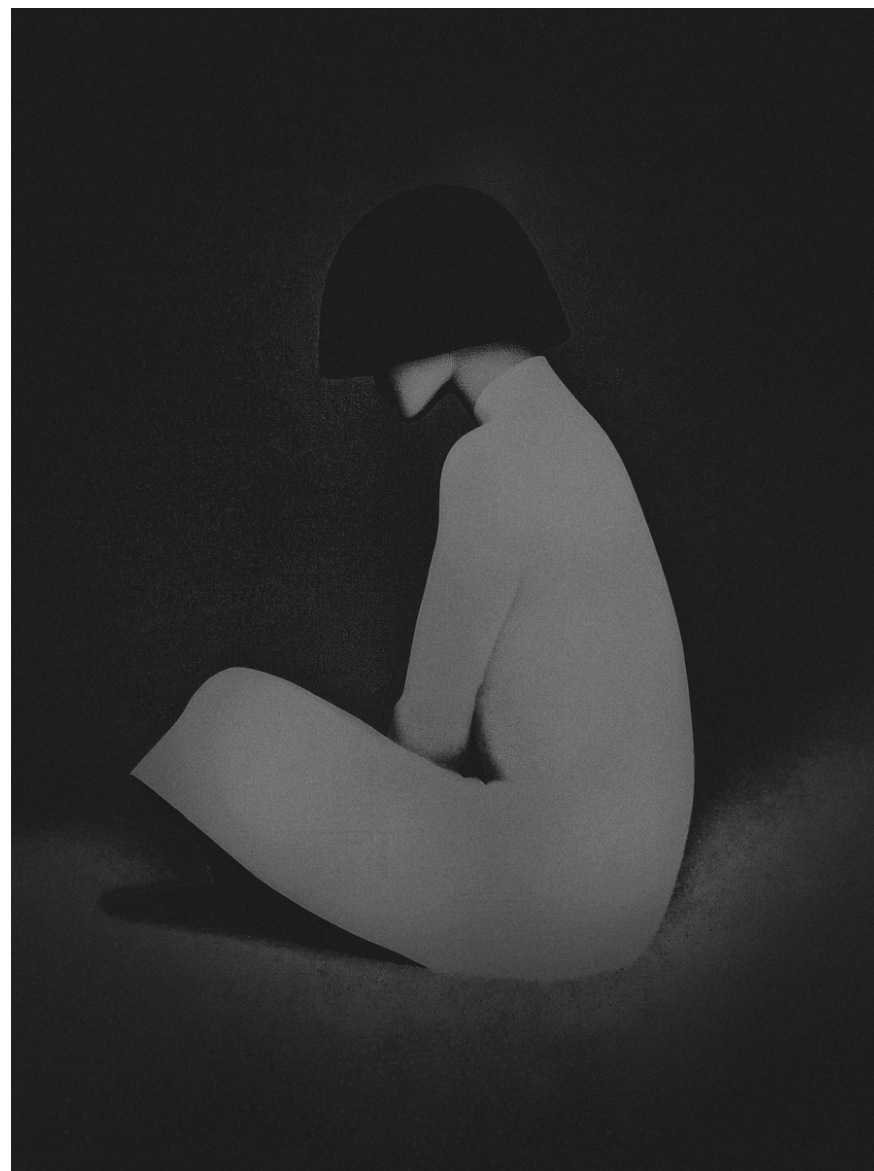
ECHO 57

2025

PAPER
Awagami Bizan Medium White

TECHNIQUE
Piezography Pro

EDITION
Unique



ECHO 58

2025

PAPER
Awagami Bizan Medium White

TECHNIQUE
Piezography Pro

EDITION
Unique



ECHO 59

2025

PAPER
Awagami Bizan Medium White

TECHNIQUE
Piezography Pro

EDITION
Unique



ECHO 60

2025

PAPER
Awagami Bizan Medium White

TECHNIQUE
Piezography Pro

EDITION
Unique



ECHO 10

2024

PAPER
Awagami Bizan Medium White

TECHNIQUE
Piezography Pro

EDITION
Unique



ECHO 11

2024

PAPER
Awagami Bizan Medium White

TECHNIQUE
Piezography Pro

EDITION
Unique



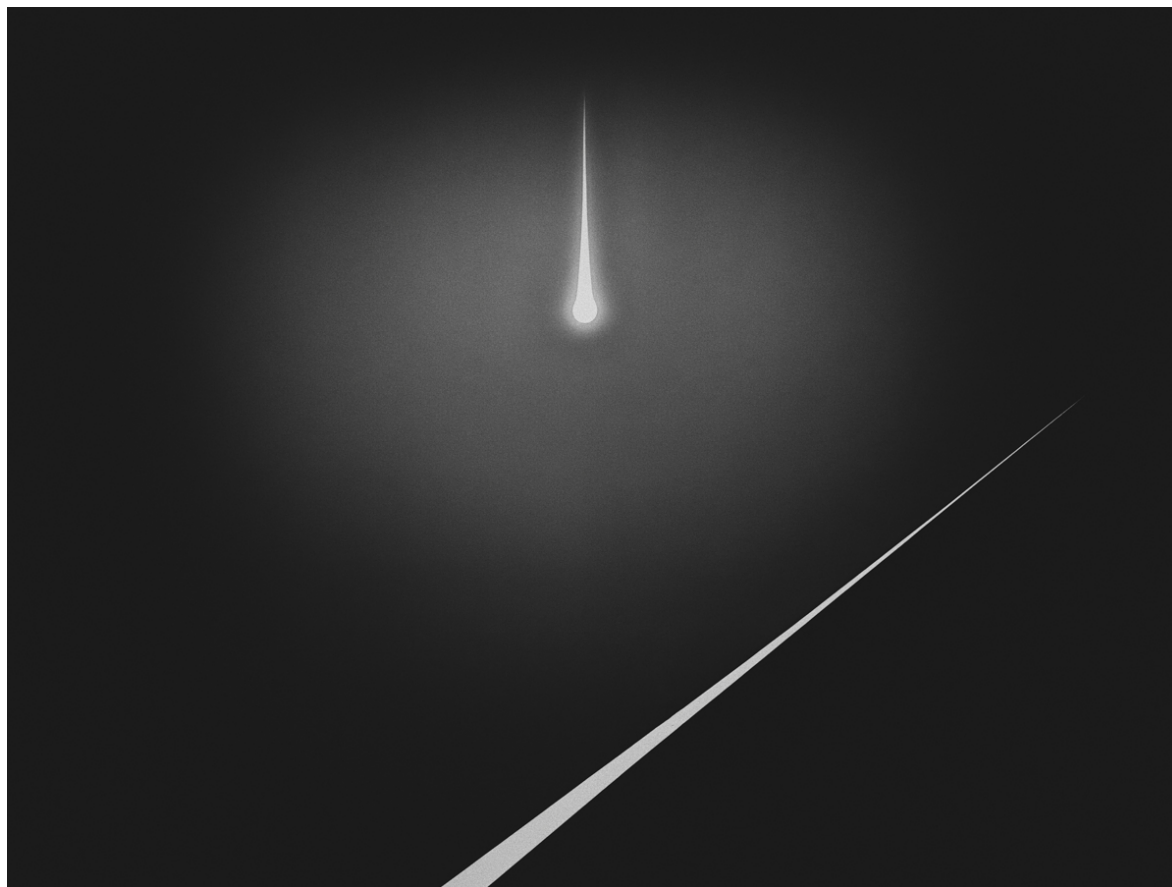
ECHO 15

2024

PAPER
Awagami Bizan Medium White

TECHNIQUE
Piezography Pro

EDITION
Unique



ECHO 16

2024

PAPER
Awagami Bizan Medium White

TECHNIQUE
Piezography Pro

EDITION
Unique



ECHO 17

2024

PAPER
Awagami Bizan Medium White

TECHNIQUE
Piezography Pro

EDITION
Unique



ECHO 19

2024

PAPER
Awagami Bizan Medium White

TECHNIQUE
Piezography Pro

EDITION
Unique



ECHO 20

2024

PAPER
Awagami Bizan Medium White

TECHNIQUE
Piezography Pro

EDITION
Unique



ECHO 21

2024

PAPER
Awagami Bizan Medium White

TECHNIQUE
Piezography Pro

EDITION
Unique



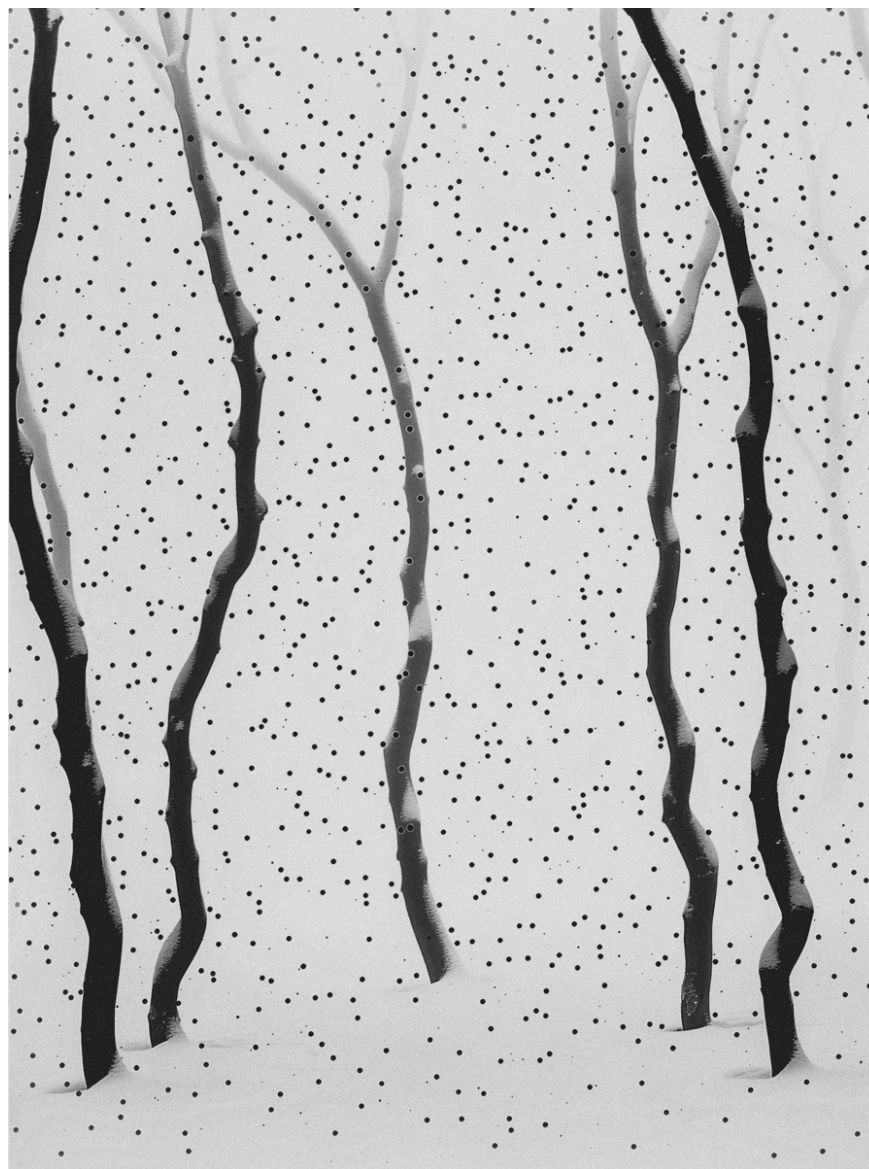
ECHO 22

2024

PAPER
Awagami Bizan Medium White

TECHNIQUE
Piezography Pro

EDITION
Unique



ECHO 23

2024

PAPER
Awagami Bizan Medium White

TECHNIQUE
Piezography Pro

EDITION
Unique



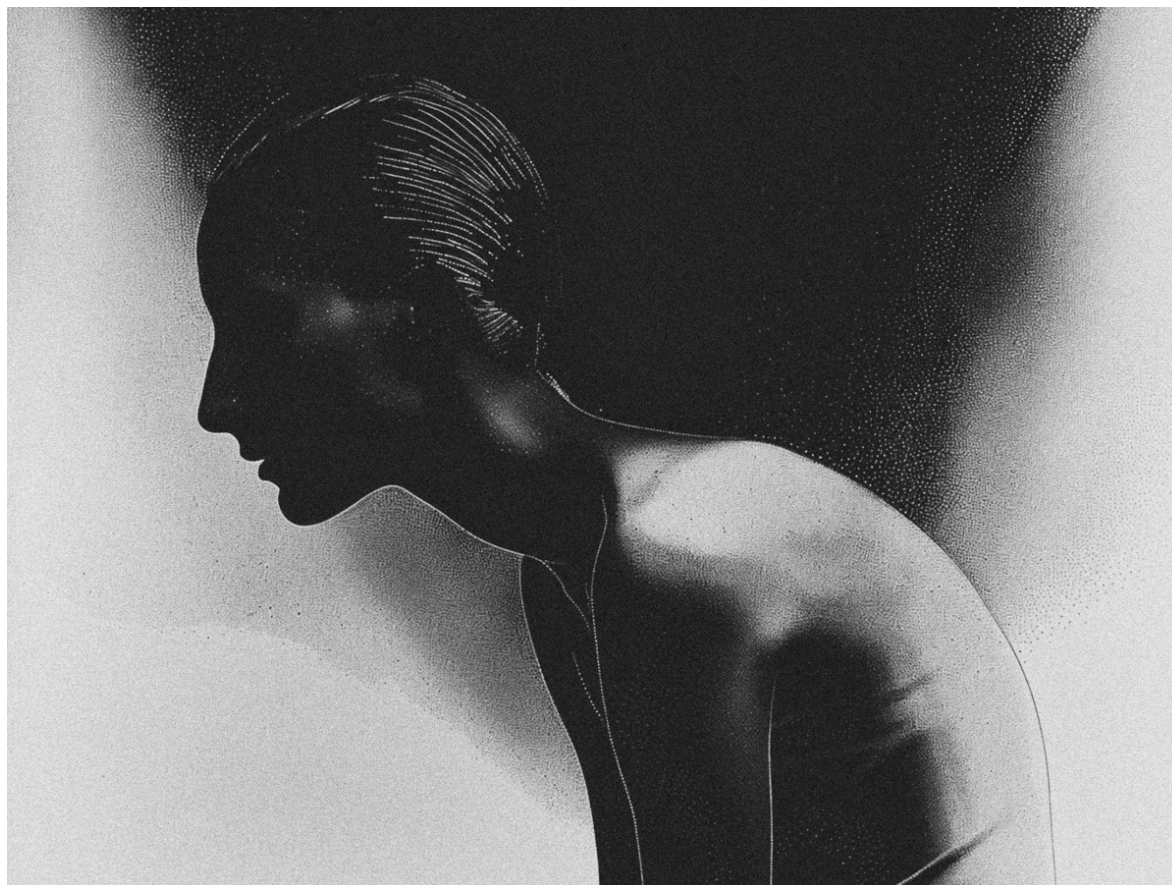
ECHO 24

2024

PAPER
Awagami Bizan Medium White

TECHNIQUE
Piezography Pro

EDITION
Unique



ECHO 25

2024

PAPER
Awagami Bizan Medium White

TECHNIQUE
Piezography Pro

EDITION
Unique



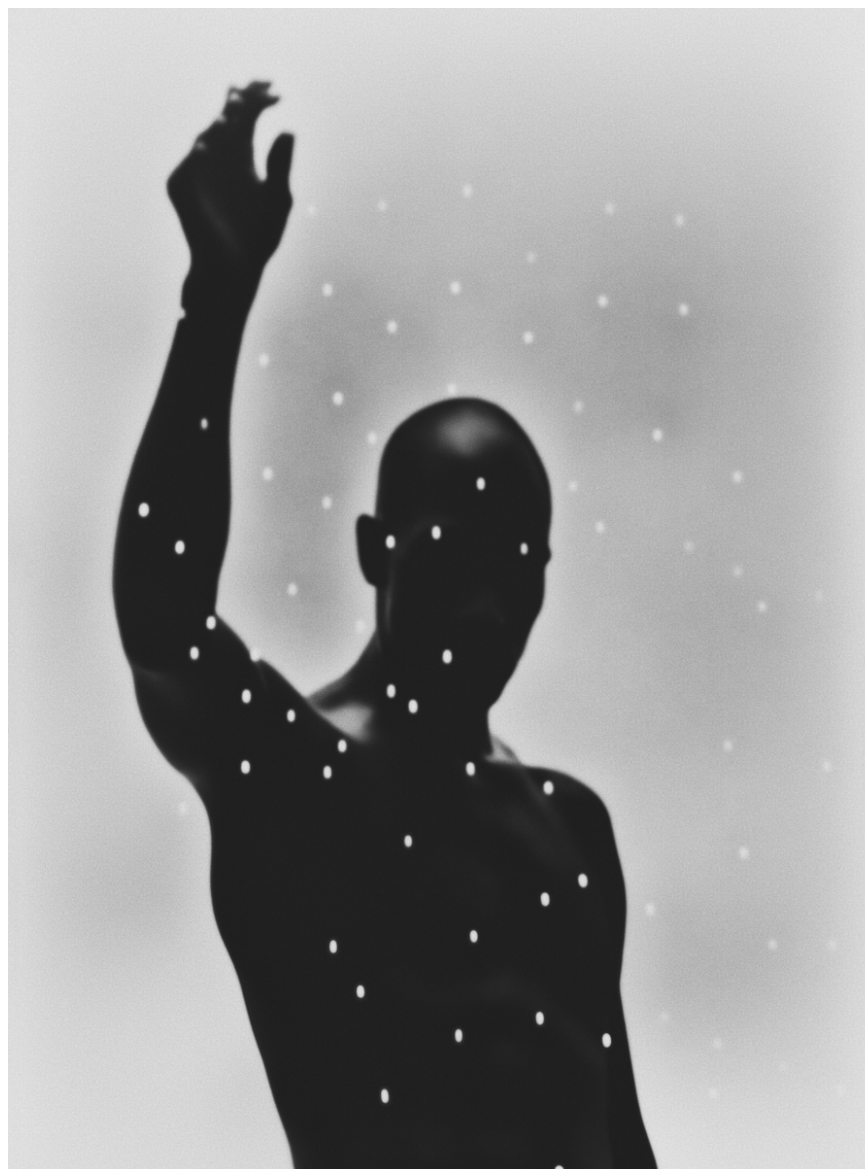
ECHO 26

2024

PAPER
Awagami Bizan Medium White

TECHNIQUE
Piezography Pro

EDITION
Unique



ECHO 27

2024

PAPER
Awagami Bizan Medium White

TECHNIQUE
Piezography Pro

EDITION
Unique



ECHO 28

2024

PAPER
Awagami Bizan Medium White

TECHNIQUE
Piezography Pro

EDITION
Unique



ECHO 8

2024

PAPER
Awagami Bizan Medium White

TECHNIQUE
Piezography Pro

EDITION
Unique



ECHO 9

2024

PAPER
Awagami Bizan Medium White

TECHNIQUE
Piezography Pro

EDITION
Unique



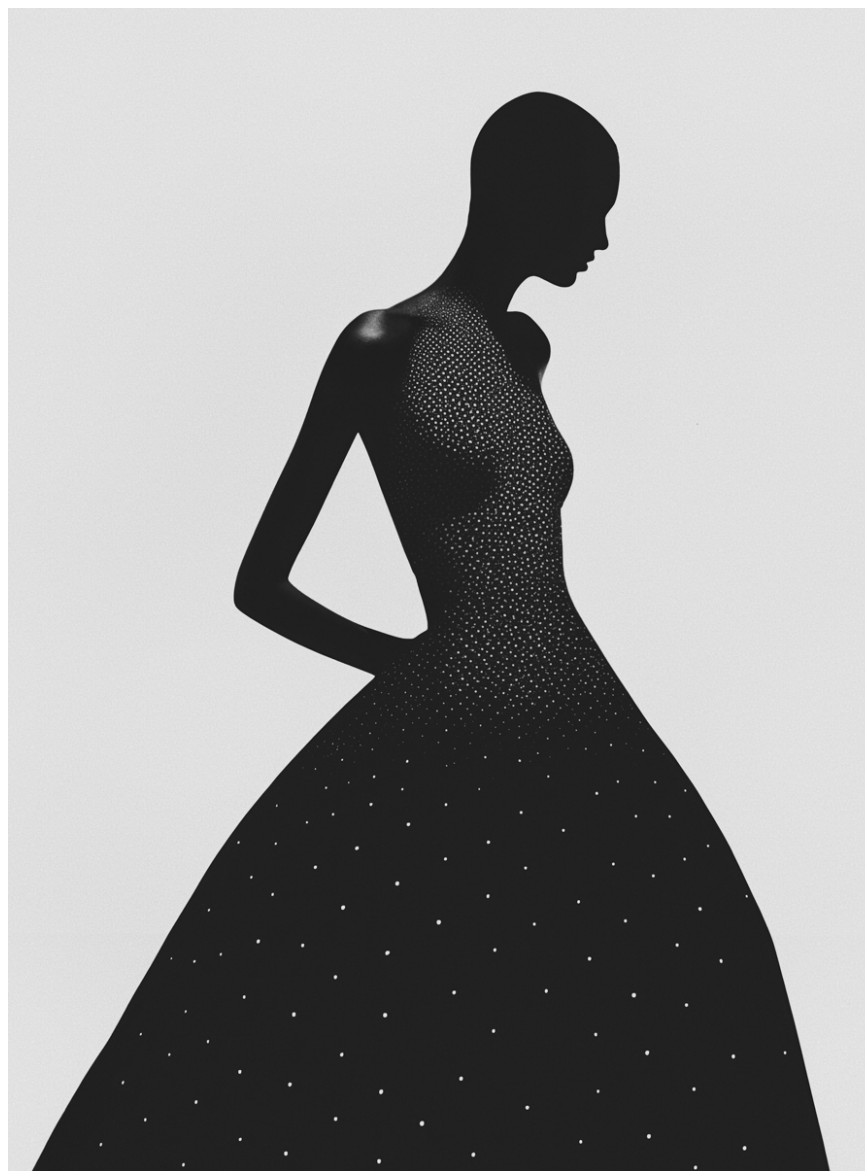
ECHO 5

2023

PAPER
Awagami Bizan Medium White

TECHNIQUE
Piezography Pro

EDITION
Unique



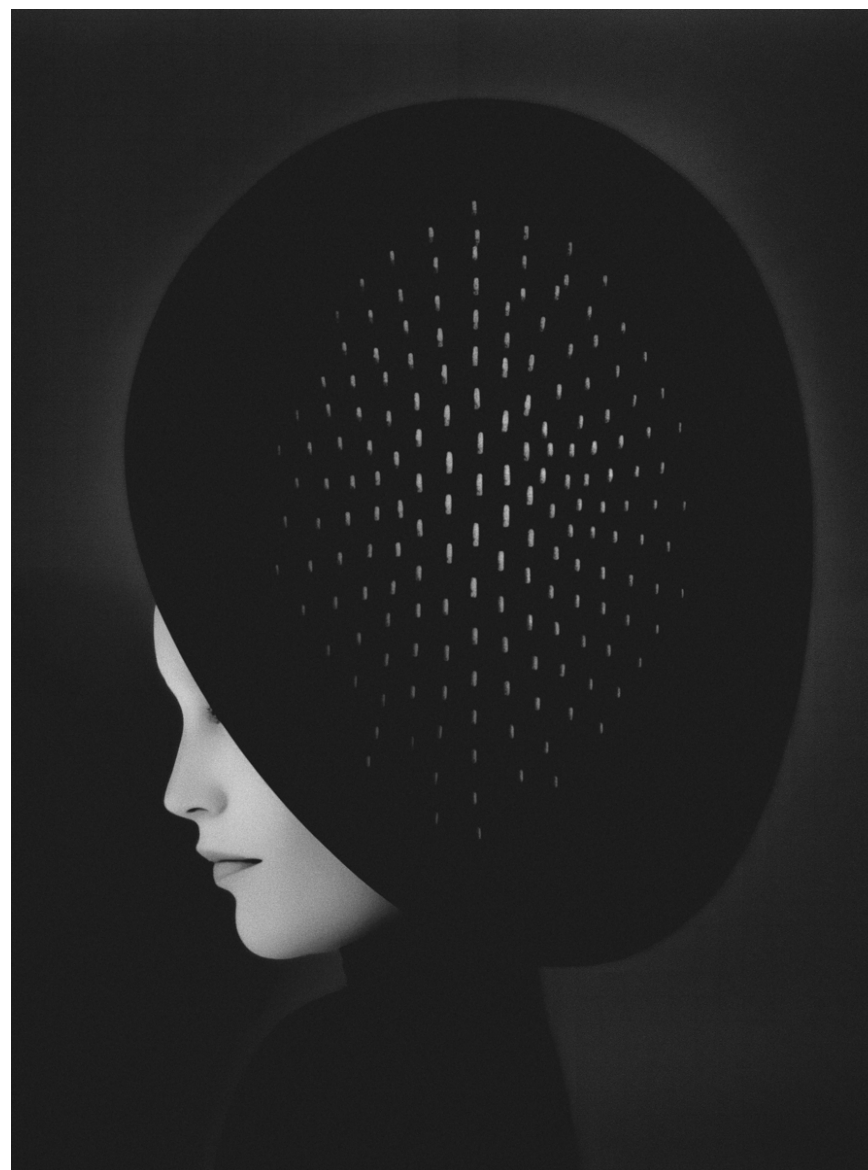
ECHO 6

2023

PAPER
Awagami Bizan Medium White

TECHNIQUE
Piezography Pro

EDITION
Unique



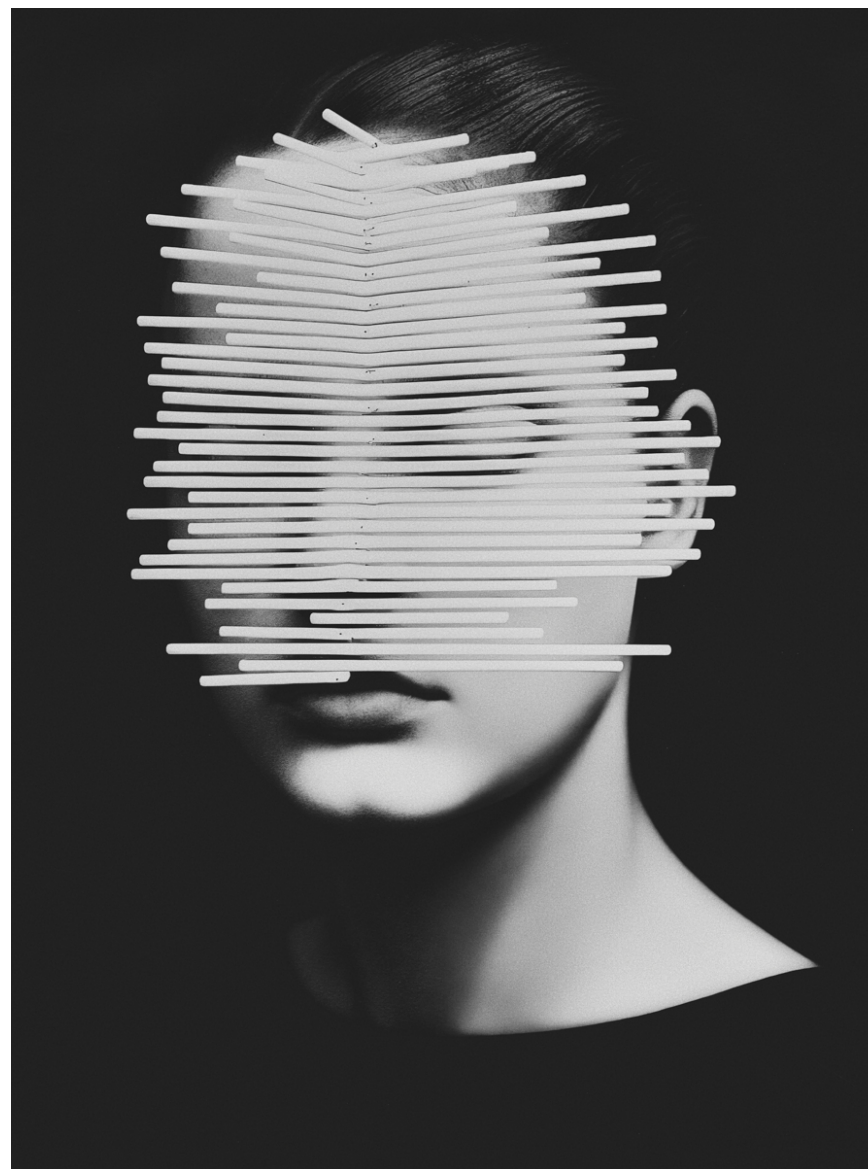
ECHO 7

2023

PAPER
Awagami Bizan Medium White

TECHNIQUE
Piezography Pro

EDITION
Unique



BASTIAAN WOUT

SALES & INQUIRIES

janneke@bastiaanwoudt.com

WEBSITE

bastiaanwoudt.com

INSTAGRAM

[@bastiaanwoudt](https://www.instagram.com/bastiaanwoudt)

STUDIO

Hazenkoog 9, 1822 BS Alkmaar, NL