



**PEAK**

BASTIAAN WOUDT

# PEAK

Nepal · Annapurna · 2019

Peak is a photographic series by Bastiaan Woudt, created during a journey through the Annapurna region of Nepal in 2019. The project marks a turning point in Woudt's practice – his first major body of work made entirely outside the studio.

The images move between landscape and portraiture, capturing the tension between the immensity of the Himalayas and the quiet persistence of the people who inhabit them. Woudt's signature monochrome language – strong contrast, graphic clarity, negative space – translates from the controlled environment of the studio to the unpredictability of altitude and weather.

Peak grew out of a personal desire to test the limits of Woudt's visual approach. Could the same formal discipline that defined his studio work hold in conditions that offered no control? The answer lies in the images: porters silhouetted against snow fields, monks framed by doorways, prayer flags dissolving into fog. The compositions are as deliberate as any studio portrait, yet shaped entirely by the landscape.

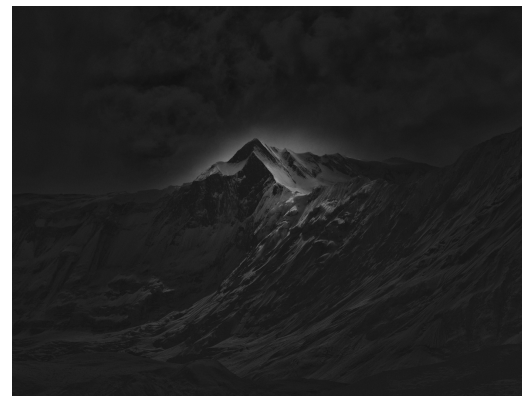
The series is not a travelogue. It is an exploration of isolation, altitude and the human presence in extreme environments. Woudt photographs Nepal the way he photographs people: with restraint, with precision, and with an eye for the moment when form and meaning converge.

**"THOSE WHO TRAVEL TO MOUNTAINTOPS ARE HALF IN LOVE WITH THEMSELVES AND HALF IN LOVE WITH OBLIVION."**

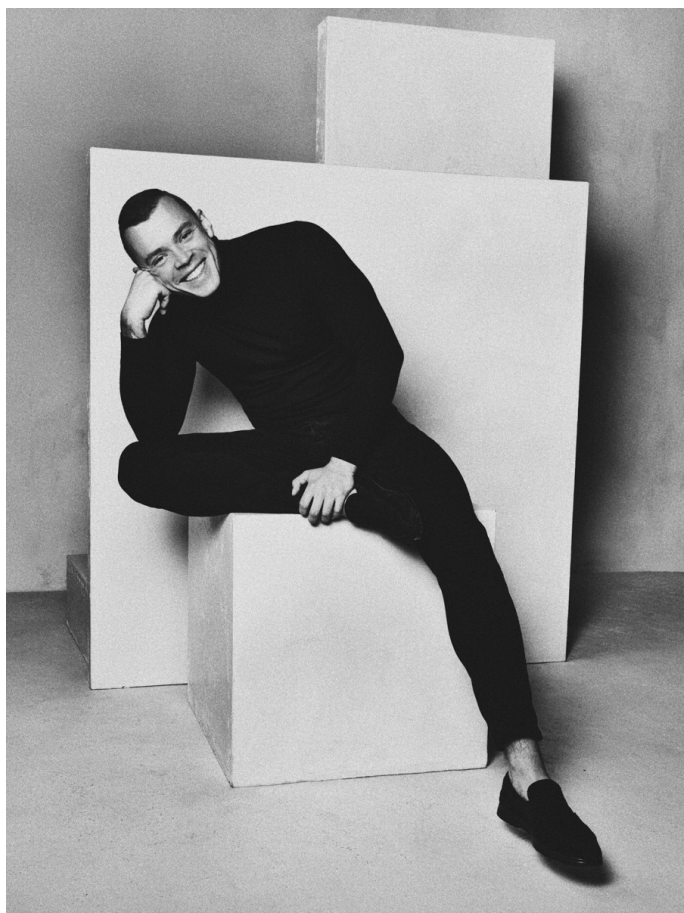
– Robert Macfarlane

## PROJECT DETAILS

LOCATION	Annapurna region, Nepal
YEAR	2019
PUBLISHED	Peak, 1605 Collective (2020)
TECHNIQUE	Archival Pigment Print



# BASTIAAN WOUTD



Bastiaan Woudt (b. 1987, the Netherlands) is a Dutch fine art photographer whose monochrome work is defined by graphic clarity, strong contrast and a deliberate use of negative space. His images strip away the incidental to reveal form, texture, light and shadow in their purest state.

His work has been exhibited internationally at galleries and institutions including Bildhalle (Zurich, Amsterdam), Atlas Gallery (London), Jackson Fine Art (Atlanta), Fahey/Klein Gallery (Los Angeles) and Jaeger Art (Berlin). His photographs are held in private and public collections worldwide, including the Getty Museum (Los Angeles) and the Rijksmuseum (Amsterdam).

Peak was the follow-up to his breakout series and marked the moment Woudt moved from studio to landscape, proving that his graphic vision could hold in the most extreme conditions.

# THE WORKS

All prints are archival pigment prints on Innova Fibaprint Baryta paper, 310 gsm – a heavyweight, fibre-based baryta paper with a smooth surface known for its deep blacks and tonal range. Prints are produced exclusively by The Final Art Print, the sole printing partner worldwide.

## FORMATS & PAPER

45 × 60 CM      Innova Fibaprint Baryta, 310 gsm

90 × 120 CM      Innova Fibaprint Baryta, 310 gsm

135 × 180 CM      Innova Fibaprint Baryta, 310 gsm

Standard Edition: editions 1-5 can be produced in either 45×60 or 90×120 cm; editions 6-10 are exclusively 90×120 cm. The edition is shared across sizes.



# PRICING & EDITIONS

FORMAT	PAPER	EDITION
45 × 60 CM	Innova Fibaprint Baryta, 310 gsm	10 + 2 AP
90 × 120 CM	Innova Fibaprint Baryta, 310 gsm	10 + 2 AP
135 × 180 CM	Innova Fibaprint Baryta, 310 gsm	3 + 1 AP

## GALLERY PRICING

FORMAT	PRINT ONLY	FRAMED	NL (INCL. TAX)
45 × 60 CM	€ 3,250	€ 3,685	€ 4,000
90 × 120 CM	€ 6,250	€ 7,135	€ 7,800
135 × 180 CM	€ 14,650	€ 17,045	€ 18,500

All prices exclude VAT unless stated.

Standard Edition: editions 1-5 available in 45×60 or 90×120 cm; editions 6-10 exclusively 90×120 cm.

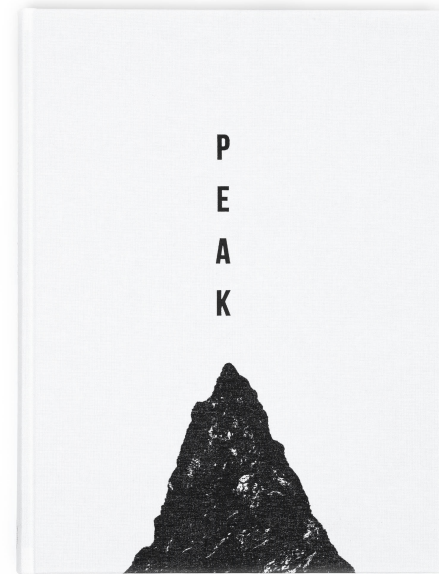


# THE BOOK

Peak, published by 1605 Collective in 2020, is a hardcover photo book presenting the complete series from Woudt's journey through the Annapurna region. The images are sequenced as a visual ascent – from the valleys and villages at the base to the stark, snow-covered passes above. It was Woudt's second monograph and confirmed his ability to work beyond the studio.

## SPECIFICATIONS

PHOTOGRAPHER	<b>Bastiaan Woudt</b>
PUBLISHER	<b>1605 Collective</b>
PUBLISHED	<b>2020</b>
PAGES	<b>264</b>
DIMENSIONS	<b>25 × 33 cm</b>
BINDING	<b>Hardcover</b>
LANGUAGE	<b>English</b>
EDITION	<b>First Edition (1,250 copies)</b>
DISTRIBUTION	<b>info@1605collective.com</b>



# CREST

2019

FORMAT

45 × 60 / 90 × 120 cm

PAPER

Innova Fibaprint Baryta, 310 gsm

TECHNIQUE

Archival Pigment Print

EDITION

10 + 2 A.P.



# FALLING STAR

2019

FORMAT

45 × 60 / 90 × 120 cm

PAPER

Innova Fibaprint Baryta, 310 gsm

TECHNIQUE

Archival Pigment Print

EDITION

10 + 2 A.P.



# KALI LA

2019

---

FORMAT

45 × 60 / 90 × 120 cm

---

PAPER

Innova Fibaprint Baryta, 310 gsm

---

TECHNIQUE

Archival Pigment Print

---

EDITION

10 + 2 A.P.

---



# MANISA

2019

FORMAT

45 × 60 / 90 × 120 cm

PAPER

Innova Fibaprint Baryta, 310 gsm

TECHNIQUE

Archival Pigment Print

EDITION

10 + 2 A.P.



# MONK

2019

FORMAT

45 × 60 / 90 × 120 cm

PAPER

Innova Fibaprint Baryta, 310 gsm

TECHNIQUE

Archival Pigment Print

EDITION

10 + 2 A.P.



# PEAK

2019

FORMAT

45 × 60 / 90 × 120 cm

PAPER

Innova Fibaprint Baryta, 310 gsm

TECHNIQUE

Archival Pigment Print

EDITION

10 + 2 A.P.



# PRAYER

2019

FORMAT

45 × 60 / 90 × 120 cm

PAPER

Innova Fibaprint Baryta, 310 gsm

TECHNIQUE

Archival Pigment Print

EDITION

10 + 2 A.P.



# TAIZA

2019

FORMAT

45 × 60 / 90 × 120 cm

PAPER

Innova Fibaprint Baryta, 310 gsm

TECHNIQUE

Archival Pigment Print

EDITION

10 + 2 A.P.



# TILICHO

2019

FORMAT

45 × 60 / 90 × 120 cm

PAPER

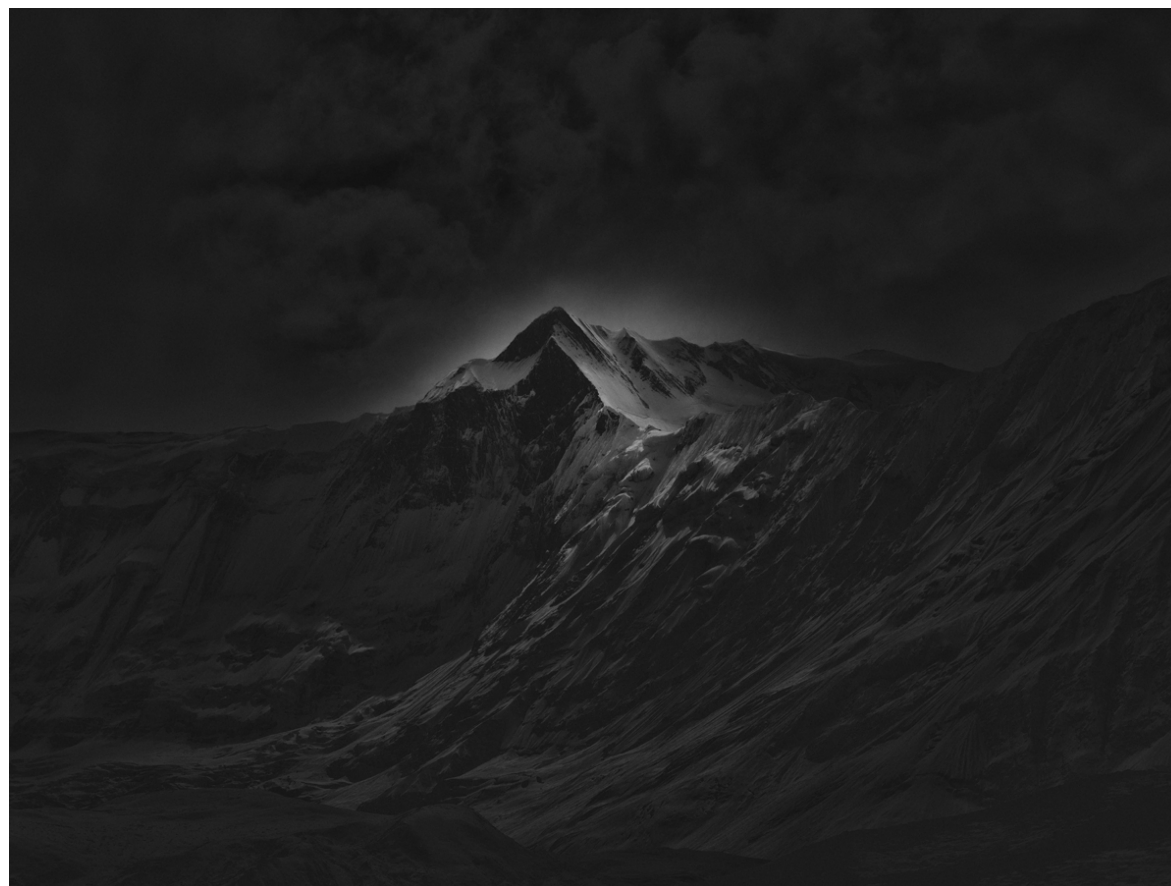
Innova Fibaprint Baryta, 310 gsm

TECHNIQUE

Archival Pigment Print

EDITION

10 + 2 A.P.



# TRIANGLE

2019

FORMAT

45 × 60 / 90 × 120 cm

PAPER

Innova Fibaprint Baryta, 310 gsm

TECHNIQUE

Archival Pigment Print

EDITION

10 + 2 A.P.



# KITE

2019

FORMAT

45 × 60 / 90 × 120 cm

PAPER

Innova Fibaprint Baryta, 310 gsm

TECHNIQUE

Archival Pigment Print

EDITION

10 + 2 A.P.



# ANNAPURNA

2019

FORMAT

45 × 60 / 90 × 120 cm

PAPER

Innova Fibaprint Baryta, 310 gsm

TECHNIQUE

Archival Pigment Print

EDITION

10 + 2 A.P.



# BARREL

2019

---

FORMAT  
45 × 60 / 90 × 120 cm

---

PAPER  
Innova Fibaprint Baryta, 310 gsm

---

TECHNIQUE  
Archival Pigment Print

---

EDITION  
10 + 2 A.P.

---



---

# BIRDS EYE VIEW

2019

---

FORMAT

45 × 60 / 90 × 120 cm

---

PAPER

Innova Fibaprint Baryta, 310 gsm

---

TECHNIQUE

Archival Pigment Print

---

EDITION

10 + 2 A.P.

---



# CAIRN

2019

FORMAT

45 × 60 / 90 × 120 cm

PAPER

Innova Fibaprint Baryta, 310 gsm

TECHNIQUE

Archival Pigment Print

EDITION

10 + 2 A.P.



# CROSS

2019

FORMAT

45 × 60 / 90 × 120 cm

PAPER

Innova Fibaprint Baryta, 310 gsm

TECHNIQUE

Archival Pigment Print

EDITION

10 + 2 A.P.



# GLOVE

2019

---

FORMAT  
45 × 60 / 90 × 120 cm

---

PAPER  
Innova Fibaprint Baryta, 310 gsm

---

TECHNIQUE  
Archival Pigment Print

---

EDITION  
10 + 2 A.P.

---



# H

2019

---

FORMAT  
45 × 60 / 90 × 120 cm

---

PAPER  
Innova Fibaprint Baryta, 310 gsm

---

TECHNIQUE  
Archival Pigment Print

---

EDITION  
10 + 2 A.P.

---



# JUNGLE

2019

---

FORMAT  
45 × 60 / 90 × 120 cm

---

PAPER  
Innova Fibaprint Baryta, 310 gsm

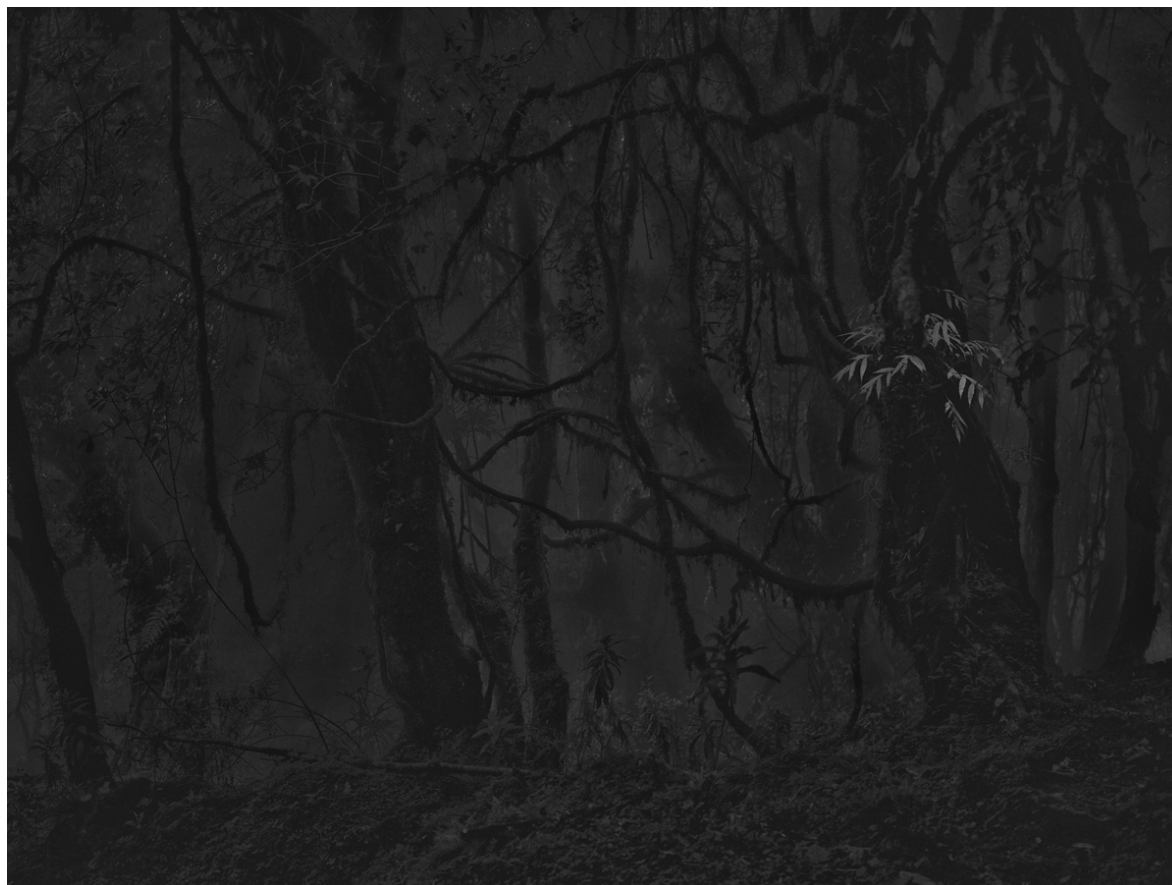
---

TECHNIQUE  
Archival Pigment Print

---

EDITION  
10 + 2 A.P.

---



# KOTO

2019

FORMAT

45 × 60 / 90 × 120 cm

PAPER

Innova Fibaprint Baryta, 310 gsm

TECHNIQUE

Archival Pigment Print

EDITION

10 + 2 A.P.



# LADDER

2019

FORMAT

45 × 60 / 90 × 120 cm

PAPER

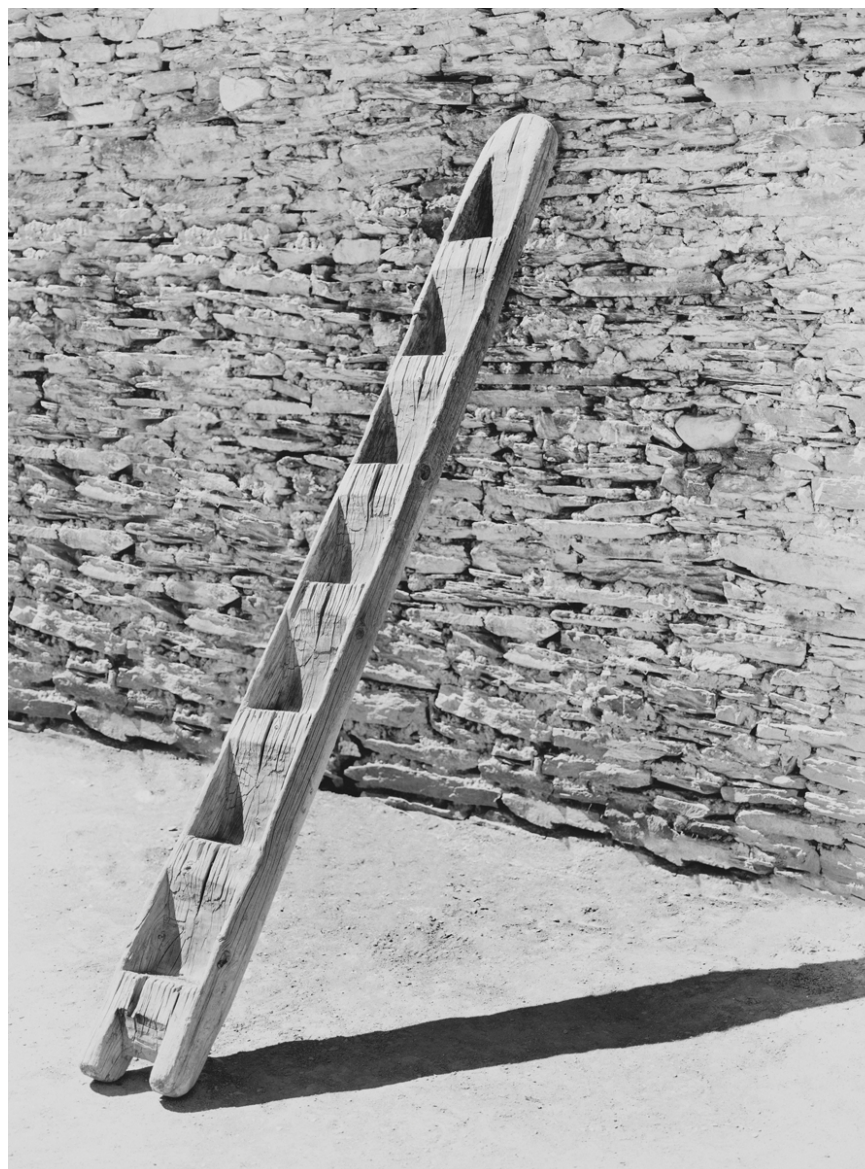
Innova Fibaprint Baryta, 310 gsm

TECHNIQUE

Archival Pigment Print

EDITION

10 + 2 A.P.



# MONK II

2019

FORMAT

45 × 60 / 90 × 120 cm

PAPER

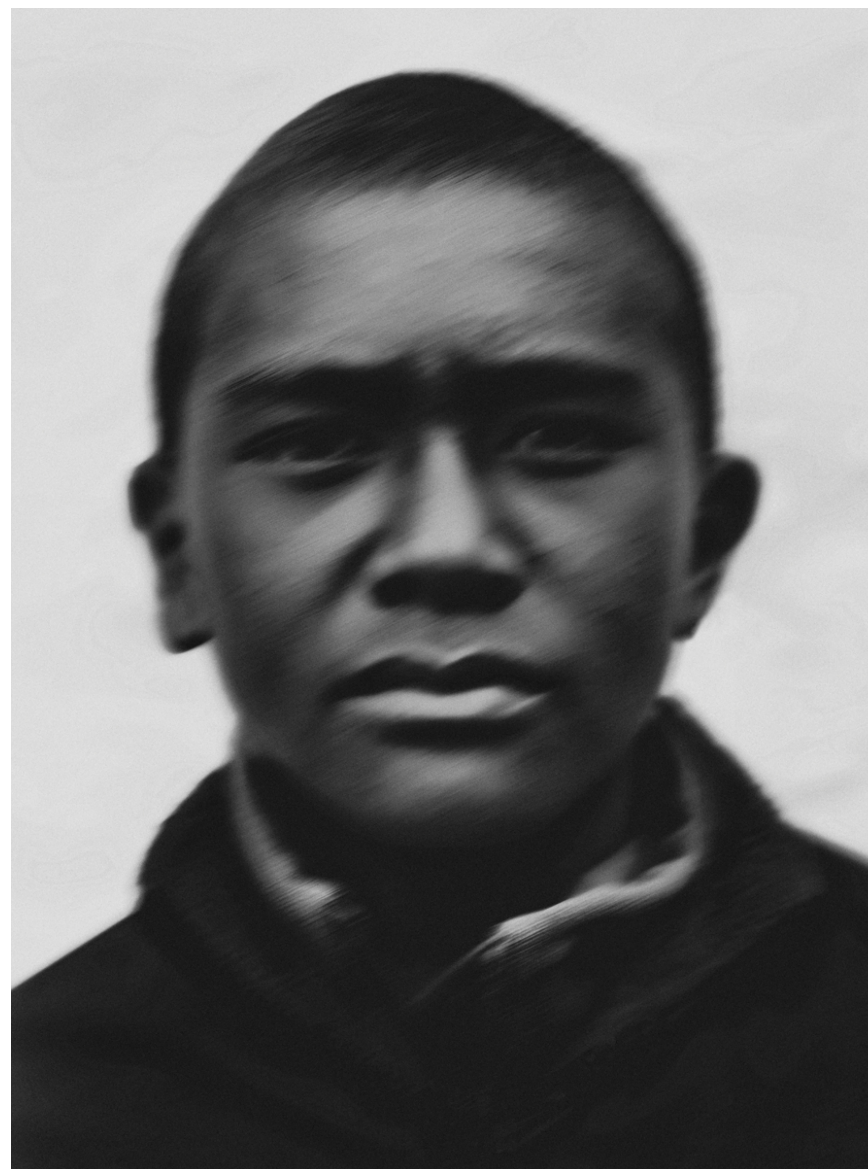
Innova Fibaprint Baryta, 310 gsm

TECHNIQUE

Archival Pigment Print

EDITION

10 + 2 A.P.



# NAMUN LA PASS

2019

FORMAT

45 × 60 / 90 × 120 cm

PAPER

Innova Fibaprint Baryta, 310 gsm

TECHNIQUE

Archival Pigment Print

EDITION

10 + 2 A.P.



# NAMUN PHEDI

2019

FORMAT

45 × 60 / 90 × 120 cm

PAPER

Innova Fibaprint Baryta, 310 gsm

TECHNIQUE

Archival Pigment Print

EDITION

10 + 2 A.P.



# PORTER

2019

---

FORMAT  
45 × 60 / 90 × 120 cm

---

PAPER  
Innova Fibaprint Baryta, 310 gsm

---

TECHNIQUE  
Archival Pigment Print

---

EDITION  
10 + 2 A.P.

---



# ROCK VALLEY

2019

FORMAT

45 × 60 / 90 × 120 cm

PAPER

Innova Fibaprint Baryta, 310 gsm

TECHNIQUE

Archival Pigment Print

EDITION

10 + 2 A.P.



# SIKLIS

2019

---

FORMAT

45 × 60 / 90 × 120 cm

---

PAPER

Innova Fibaprint Baryta, 310 gsm

---

TECHNIQUE

Archival Pigment Print

---

EDITION

10 + 2 A.P.

---



# WOMAN IN KOTO

2019

---

FORMAT  
45 × 60 / 90 × 120 cm

---

PAPER  
Innova Fibaprint Baryta, 310 gsm

---

TECHNIQUE  
Archival Pigment Print

---

EDITION  
10 + 2 A.P.

---



# BASTIAAN WOUT

---

SALES & INQUIRIES

[janneke@bastiaanwoudt.com](mailto:janneke@bastiaanwoudt.com)

BOOK DISTRIBUTION

[info@1605collective.com](mailto:info@1605collective.com)

WEBSITE

[bastiaanwoudt.com](http://bastiaanwoudt.com)

1605 COLLECTIVE

[1605collective.com](http://1605collective.com)

INSTAGRAM

[@bastiaanwoudt](https://www.instagram.com/bastiaanwoudt)

STUDIO

Hazenkoog 9, 1822 BS Alkmaar, NL